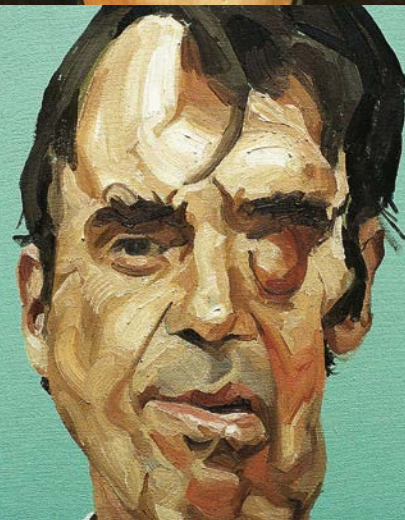
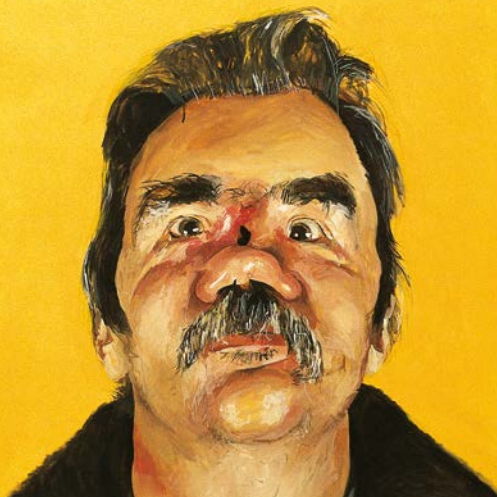
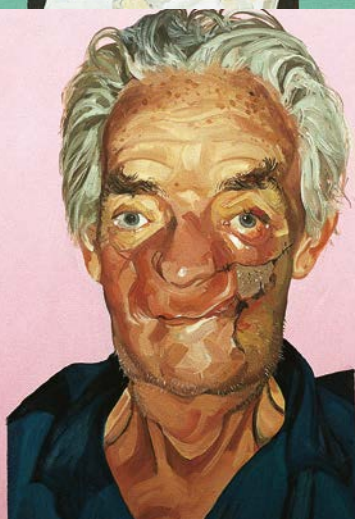


fieldfisher

# A Face in the Crowd

Thursday 15th March 2017

*Riverbank House, 2 Swan Lane, London, EC4R 3TT*



Facial trauma, the resultant injuries and psychiatric sequelae are little understood. The effects can be devastating and occasionally early management is essential for full recovery to be achieved. Facial injuries all too often come hand in hand with other severe injuries, such as head injuries, and can understandably be overlooked.

This conference promises, with a high calibre of speakers, to provide an educational insight into many aspects of maxillofacial injuries including: trauma, reconstructive dentistry, plastics, prosthetics, camouflage makeup, the psychiatric response and conservative management. We will focus on what is available to clients surgically and in terms of ongoing rehabilitation to provide an overview of the exciting advances in the field and how we can support those to cope with dramatic changes in their appearance.

- |               |  |
|---------------|--|
| 08:45 – 09:30 | <b>Registration, Networking and Exhibition Stands</b>  |
| 09:30 – 09:45 | <b>Introduction and Conference Chair</b><br>Jennifer Buchanan, Senior Associate, Fieldfisher   |
| 09:45 – 10:30 | <b>Maxillofacial Trauma</b><br>Professor Simon Holmes, Consultant Oral & Maxillofacial Surgeon, Royal London Hospital<br>An insight from the leading and internationally recognised Cranio-Facial Trauma Surgeon at Barts Health into managing complex pan-facial injuries for both primary and revision trauma surgery. Providing an understanding into the intricate surgical planning and treatment of maxillofacial trauma.  |
| 10:30 – 10:55 | <b>Mid morning break, Networking and Exhibition Stands</b>   |
| 10:55 – 11:45 | <b>Dental Trauma: Dental Restoration and Advanced Dental Reconstruction with Osseointegrated Implants</b><br>Dr Andrew Dawood and Dr Susan Tanner, Specialists in Periodontics and Prosthodontics, The Dawood and Tanner Specialist Dental Practice<br>Susan and Andrew together with their multidisciplinary team have a wealth of experience in restoring patients to function after trauma to the jaws. They will outline the many options available for patients today, including the cutting-edge technologies that are used to assess patients and then guide and build reconstructions for those patients who have damaged or missing teeth or who have sustained more dramatic injuries. They will present a broad range of cases, with a particular focus on using careful planning and sophisticated technology to provide aesthetic results and a return to function with a minimum of time in surgery. |
| 11:45 – 12:05 | <b>3D Printing and 3D Planning to Aid Rehabilitation</b><br>Dr Veronique Sauret-Jackson, Managing Director, Cavendish Imaging<br>Sophisticated 3D printing and surgical planning services have been shown to provide great benefit to patients. Practical clinical and technical information on how to plan and make the best use of 3D printing technologies to achieve the best outcomes for patients.   |
| 12:05 – 12:35 | <b>Prosthetic Facial Rehabilitation</b><br>Dr Trevor Coward, Reader / Consultant in maxillofacial & Craniofacial Rehabilitation, Academic Centre of Reconstructive Science, Kings College<br>Dr Coward will discuss the use of facial prostheses for hard and soft tissue as a result of result of trauma, surgical resection or congenital malformations. Delegates will be provided with an oversight of the techniques and prosthesis available today. The outcome has been shown to improve the quality of life for the patient and help rehabilitate them back into society.  |
| 12:35 – 13:30 | <b>Lunch, Networking and Exhibition Stands</b>   |

- 13:30 - 14:00 **Plastic Surgery Reconstruction of Facial Deformity**  
 Mr Christopher Abela MA MB BChir FRCS (plast) Dip Aesth Surg Consultant Craniofacial and Plastic Surgeon, Chelsea and Westminster Hospital, BUPA Cromwell Hospital, the Lister Hospital, The Portland Hospital  
 In some circumstances plastic surgery is essential however it is equally important to address asymmetries, anomalies or differences in facial appearance. Facial surgery aims to restore form and function, whilst maintaining a person's natural appearance or enhancing beauty. Mr Abela aims to cover the breadth of facial deformities and the reconstructive tools available.
- 14:00 - 14:20 **Camouflage**  
 Lady Mimi Lloyd Adamson, Remedial Camouflage Consultant Chelsea Westminster Hospital Department of Dermatology & Plastic Surgery  
 This presentation will discuss the enormously challenging problems people face with any form of disfigurement: the psychological difficulty with an altered body image and the trauma of facing friends, society and employers who make instant assumptions based on appearance. Camouflage creams were initially developed after the Second World War to help badly burned pilots to deal with their injuries and since has proven to help numerous cases with traumatic injuries. This presentation will highlight what is achievable.
- 14:20 - 14:40 **Scar Management and Laser Treatment**  
 How to manage scars is little understood. This talk will discuss the treatment options available including how lasers are able to produce significant lightening of lesions tailored to individual needs, depending on the type of lesion, size, location, skin tone and how far the lesion is under the skin's surface.
- 14:40 - 15:00 **Midafternoon break - Networking and Exhibition Stands**
- 15:00 - 15:30 **The Impact of Facial Injury and the Role of Clinical Psychology**  
 Dr Deba Choudhury-Peters, Chartered Clinical Psychologist, DCP Therapy  
 Facial injuries can be stigmatising, cause anxiety and having a detrimental affect on a patient's self confidence. This presentation will cover facial injury types, the psychological morbidity and the role of psychological interventions and therapy. Dr Deba Choudhury-Peters' will share her experience of running a psychology service within an NHS maxillofacial trauma clinic at the Royal London Hospital, and how this has continued in private practice, including case studies from the clinic and beyond.
- 15:30 - 15:50 **A Personal Experience**  
 Dr John Chatterjee MBBS FRCA MACAP Dip RTM RCS (Ed) PG Dip Aero RT (Otago) Consultant Anaesthetist, Guy's and St Thomas' Hospital, Major Incident Advisor, London Ambulance Service, Emeritus Physician, London's Air Ambulance, Faculty, Institute of Pre Hospital Care (QMUL), Senior Medical Advisor, Remote Medic UK  
 John is an anaesthetic consultant at Guy's and St. Thomas' NHS Foundation Trust, for the London Ambulance Service. He is a Major Incident Medical Advisor and has worked for air ambulances in Australia, New Zealand and in the UK, as well as BSAICS, motorsport and event medicine. He will share his own experiences.
- 15:50 - 16:10 **The Power of Touch and Acceptance**  
 Lynn Rae, Remedial face and jaw massage therapist  
 An overview of conservative management, including how specialised ScarWork massage can improve feeling and functionality in scars and surrounding tissues by creating better movement between the layers of the skin, fascia and muscle. Improvement in aesthetic appearance and texture of the scars can also be seen, reducing pain and numbness. Also covered will be the use of Facial Pilates to regain muscle balance and connection to the face.
- 16:10 - 16:15 **Conference Chair - close**

To RSVP please visit <http://bit.ly/2G8fIU5> or email [personalinjurysvp@fieldfisher.com](mailto:personalinjurysvp@fieldfisher.com)

# Combating cancer, injury and disfigurement in the most socially important part of our bodies - the face and mouth

This is Henry.

A tumour in his jaw spread up through his nose, cheekbones, eye-socket and skull, destroying the bones at these sites. Multiple surgeries were needed to remove the cancer and reconstruct his face. Sadly, Henry lost his battle, but it does not have to be this way.

Saving Faces is dedicated to helping patients like Henry through research to improve

- Cancer Prevention
- Early Diagnosis
- Treatment
- Patient Support

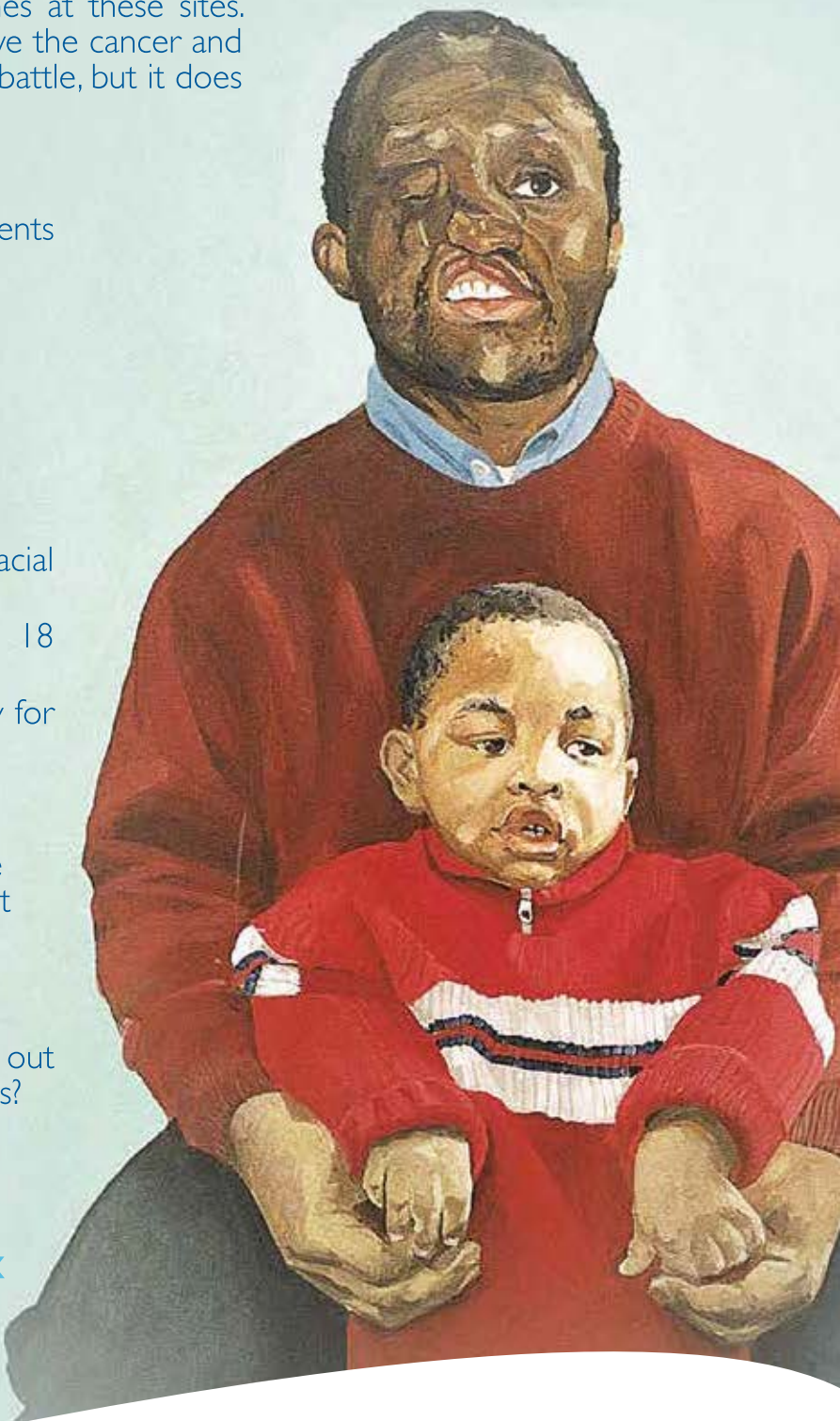
Every year in the UK

- 125,000 young people sustain facial injuries
- 6,500 people get mouth cancer. 18 people a day
- 15,000 people undergo jaw surgery for facial disfigurement

Saving Faces is funding the world's first National Facial and Oral Research Centre (NFORC) to determine how best to treat all patients with facial disease, deformities and injuries.

We urgently need your support to carry out this life-changing research. Will you help us?

Visit [www.savingfaces.co.uk](http://www.savingfaces.co.uk)  
for more information



## Saving Faces

The Facial Surgery Research Foundation

